



# ROBIN POPE SAFARIS

M A L A W I A N D Z A M B I A



## Zambia & Malawi Educational with Robin Pope Safaris

**South Luangwa, Zambia:** Nkwali 2 nights, Nsefu 1 night & Luangwa Bush Camping 1 night, Kafunta 5 nights & Mwamba 2 nights

**Majete Wildlife Reserve, Malawi:** Mkulumadzi 2 nights

**Lake Malawi, Malawi:** Pumulani 2 nights

**Satemwa:** Huntingdon 4 nights

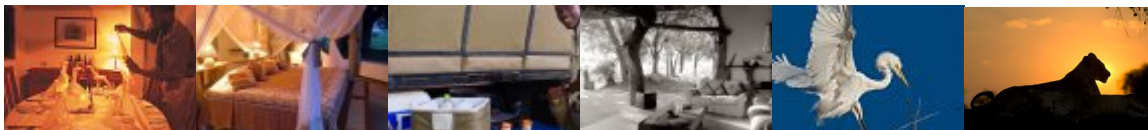
**Kasanka:** Wasa Camp

**NOTE:** we have an option of adding on Lower Zambezi and Livingstone to this trip. Please advise at the time of booking if you would prefer that option

### OVERVIEW OF DESTINATIONS

This safari takes place on the banks of one Zambia's one of the most beautiful and unspoilt river – the Luangwa. The **Luangwa Valley**, which marks the end of the Great Rift Valley, is one of the last unspoilt wilderness areas and possibly the finest wildlife sanctuary in Africa. The Luangwa River flows into the Zambezi River – just below the Lower Zambezi National Park.

Malawi is a landlocked country, running down the end of the Great Rift Valley. Dominated by **Lake Malawi**, the third largest lake in Africa, the surrounding country is exceptionally beautiful with dramatic scenery that includes rocky outcrops, high mountains, plateaus and views across what is considered to be Africa's most beautiful lake. Malawi is known as the "Warm Heart of Africa" and as a people the Malawians live up to this name. They are extremely friendly and welcoming. There are many market scenes, road side stores, cottage industries that a visitor can comfortably visit. With both the scenery and the culture Malawi is a great country to drive in.



### TRIP SUMMARY

DAY	ITINERARY	ACCOMMODATION	INCLUSIONS
16 Oct 2012	On arrival at Lusaka International Airport you will be met and assisted by a Robin Pope Safaris representative; clear customs and immigration plus check in for your Mfuwe flight (1 hr 10 mins). You may have a chance to enjoy your first safari experience in South Luangwa today, depending on your arrival time.	Nkwali Camp	Fully Inclusive
17 Oct 2012	A full day of activities to enjoy the Luangwa Valley. There is also a chance to visit Kawaza Village for cultural experience as well as site inspection of Luangwa River Camp, Luangwa Safari House & Robin's House.	Nkwali Camp	Fully Inclusive
18 Oct 2012	After a relaxed breakfast by the campfire, you will have a game drive transfer to the Nsefu Sector of the park.	Nsefu Camp	Fully Inclusive
19 Oct 2012	Early morning breakfast followed by a safari walk to your bush	Luangwa Bush Camping	Fully Inclusive

	camping site. The day is spent exploring on foot with one of our most seasoned safari guides (don't forget to pack your walking shoes!).		
20 Oct 2012	After your breakfast and goodbyes you will be transferred to Mfuwe Airport and onto Mkulumadzi via Lilongwe or Blantyre	Mkulumadzi	Fully Inclusive
21 Oct 2012	Full day of activities	Mkulumadzi	Fully Inclusive
22 Oct 2012	Transfer by road to Pumulani today to enjoy your last couple of days of this trip relaxing on the beach, Lake Malawi.	Pumulani	Fully Inclusive
23 Oct 2012	Enjoy a relaxed day on the shores of the Lake OR the endless list of activities on offer.	Pumulani	Fully Inclusive
24 Oct 2012	Transfer by road to Satemwa for Huntingdon House	Huntingdon	Full board
25 Oct 2012	Full day of activities	Huntingdon	Full board
26 Oct 2012	Full day of activities	Huntingdon	Full board
27 Oct 2012	Full day of activities	Huntingdon	Full board
28 Oct 2012	Transfer by road to Lilongwe for onwards flight to Mfuwe	Kafunta	Full board
29 Oct 2012	Full day of activities.	Kafunta	Full board
30 Oct 2012	Transfer to Mwamba	Mwamba	Full board
31 Oct 2012	Full day of activities	Mwamba	Full board
01 Nov 2012	Transfer by road to Kafunta	Kafunta	Full board
02 Nov 2012	Full day of activities.	Kafunta	Full board
03 Nov 2012	Full day of activities.	Kafunta	Full board
04 Nov 2012	Transfer by light aircraft to Kasanka National Park for Wasa	Wasa	Full board
05 Nov 2012	Full day of activities.	Wasa	Full board
06 Nov 2012	Full day of activities.	Wasa	Full board
07 Nov 2012	Full day of activities.	Wasa	Full board
08 Nov 2012	Transfer by road to airstrip light aircraft to Lusaka to connect to international flight at 01:45 hours.	Transit	Breakfast

**Includes**

- *all transfers by road and air starting in Lusaka and ending in Lusaka*
- *accommodation on a full board basis plus drinks – while on Robin Pope Safaris fam trip – all drinks extra at the properties for the extension in Malawi and South Luangw*
- *activities and select motorised activities at Pumulani*
- *laundry*

**Excludes**

- *airport departure taxes (US\$8 for Zambia & US\$7 for Malawi – domestic; & (US\$25 international) – can only now be paid in Zambia Kwacha for Zambia.*
- *Zambian airport security charges US\$3 domestic & US\$5 international*
- *gratuities*
- *visa fees if applicable – please confirm with us*
- *international flights*
- *drinks and Park fees at Kafunta*
- *All activities at Huntingdon House Satemwa*

**\*\*\*\* NOTE\*\*\*\***

Note that National Airports in Lusaka now require Zambian Kwacha for domestic airport tax. Tours Africa our representatives at Lusaka International Airport will assist the guests to obtain the kwacha from the nearest bank or Bureau de Change within the airport.

Required kwacha amount at the moment is

Domestic Airport tax

ZMK 58,000 per person Lusaka/Mfuwe

ZMK 156,000 per person Mfuwe/Lilongwe

ZMK 58,000 per person Mfuwe/Lusaka

This is the US\$13 domestic departure tax equivalent